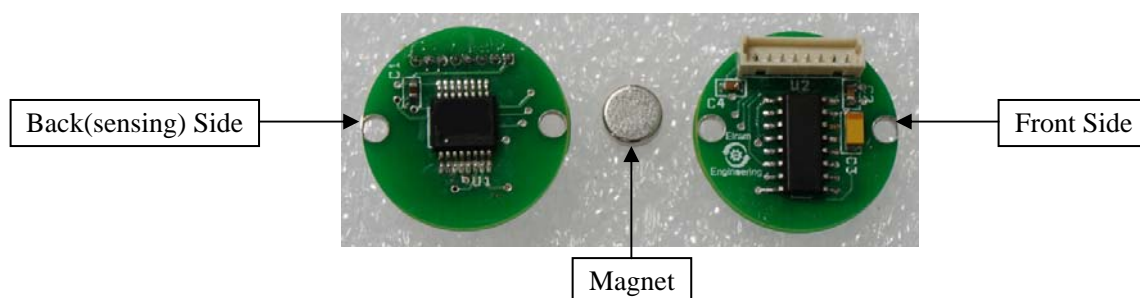


ALLBLUE

Incremental Solidshaft Encoder EI20S06



Interface

Interface	RS422 Differntial
Profile	N/A
Diagnostics	Memory
Programming Functions	Resolution, preset (zero point), counting direction, diagnosis
Transmission Rate	>12Mbps
Interface Cycle Time	< 1 ms

Outputs

Output Driver	AM26C31
---------------	---------

Electrical Data

Supply Voltage	5 VDC (On power supplies comply with EN 50178)
Current Consumption	≤ 50 mA
Power Consumption	≤ 0.25 W
Start-Up Time	< 10 ms
Reverse Polarity Protection	Yes
Short Circuit Protection	Yes
EMC: Emitted Interference	EN 61000-6-4
EMC: Noise Immunity	EN 61000-6-2
MTTF	50,000 hours @ 40° C

Sensor

Technology	Magnetical
Resolution	4096PPR
Accuracy (INL)	$\pm 0.1^\circ$
Code	N/A

Environmental Specifications

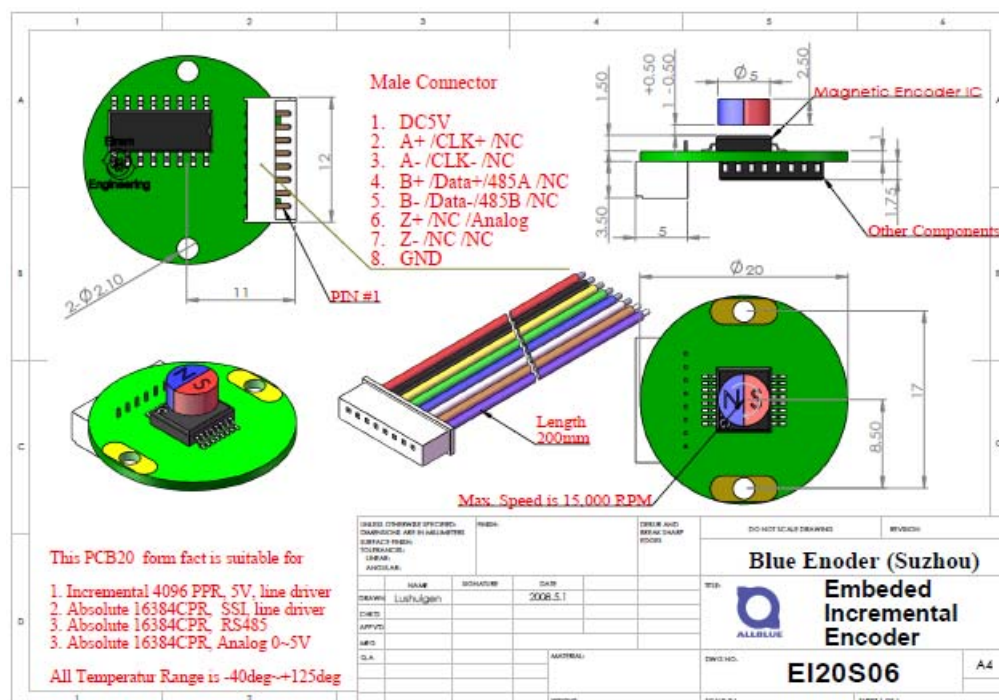
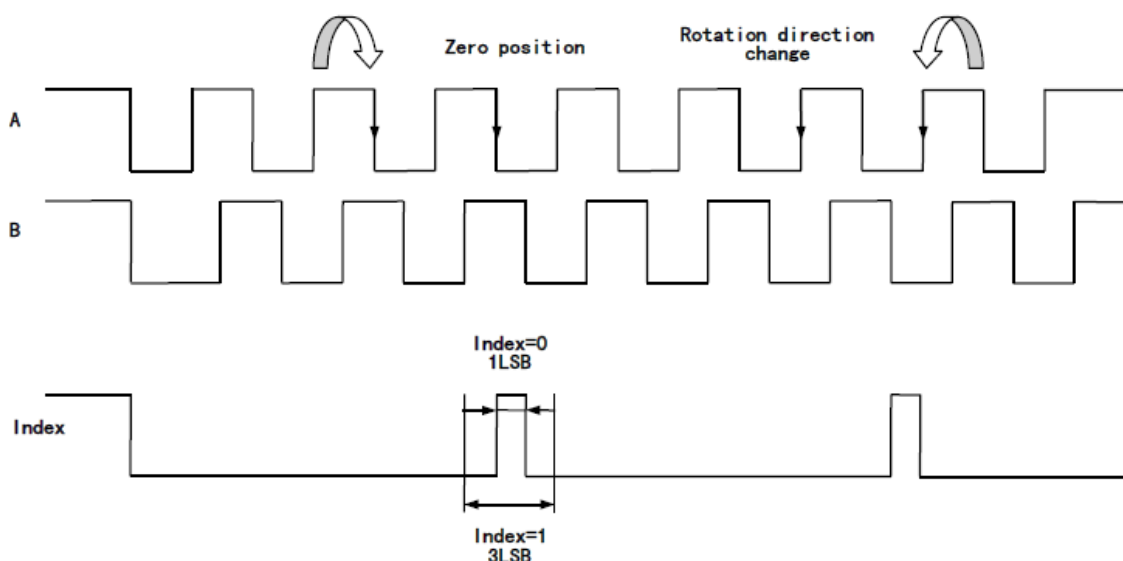
Operating Temperature	-40° C ~ +105° C
-----------------------	------------------



Storage Temperature	-40° C ~ +125° C
---------------------	------------------

Mechanical Data

PCB Outer Diameter	ø 20 mm
Max. PCB Thickness	5.21 mm
Max. Mechanical Speed	≤ 10000 rpm
Weight	20 g (with magnet)

Dimensional Drawing**Quadrature A/B wave chart**



Contact

Suzhou Allblue Electronic Technology Co., Ltd.

Address: No. 558, Fenhu Avenue, Wujiang District, Suzhou, China; Postalcode: 215211

Telephone: +86 573 80771560; 13901668071; Telefax: +86 573 80771561

Website: www.blucoder.com; Email: newmoon002@163.com

All dimension in mm. The picture and drawing are for general presentation purposes only. Please refer to the "Download" section for detailed technical drawings. Allblue, All rights reserved. We do not assume responsibility for technical inaccuracies or omissions. Specifications are subject to change without notice.